

[www.camera-studio.es](http://www.camera-studio.es)  
**camera**studio



Production

INDEX

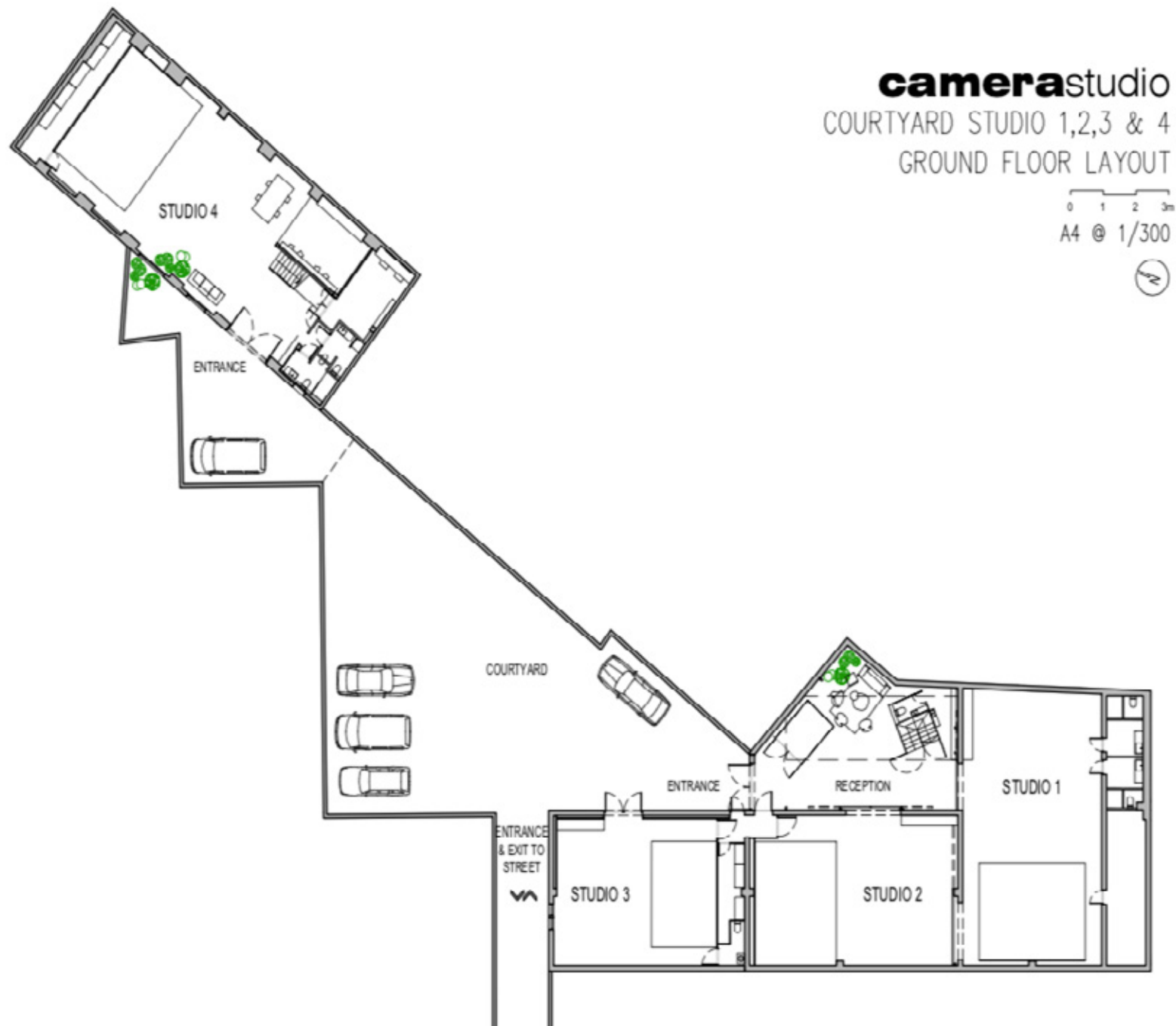
2 A studio you can trust

FLOOR PLANS STUDIOS 1, 2, 3 and 4	4 - 7
STUDIO 1	8 y 9
STUDIO 2	10 y 11
STUDIO 3	12 y 13
STUDIO 4	14 y 15
STUDIO 5	16 y 17
FORFAIT OPTION 1	19
FORFAIT OPTION 2	20
FORFAIT OPTION 3	21
FLASH - EQUIPMENT INCLUDED IN HIRE	22
CONTINUOUS LIGHT - EQUIPMENT INCLUDED IN HIRE	23
HIRE TERMS AND CONDITIONS	25
CAMERA-RENT	26 y 27
CONTACT	28 y 29

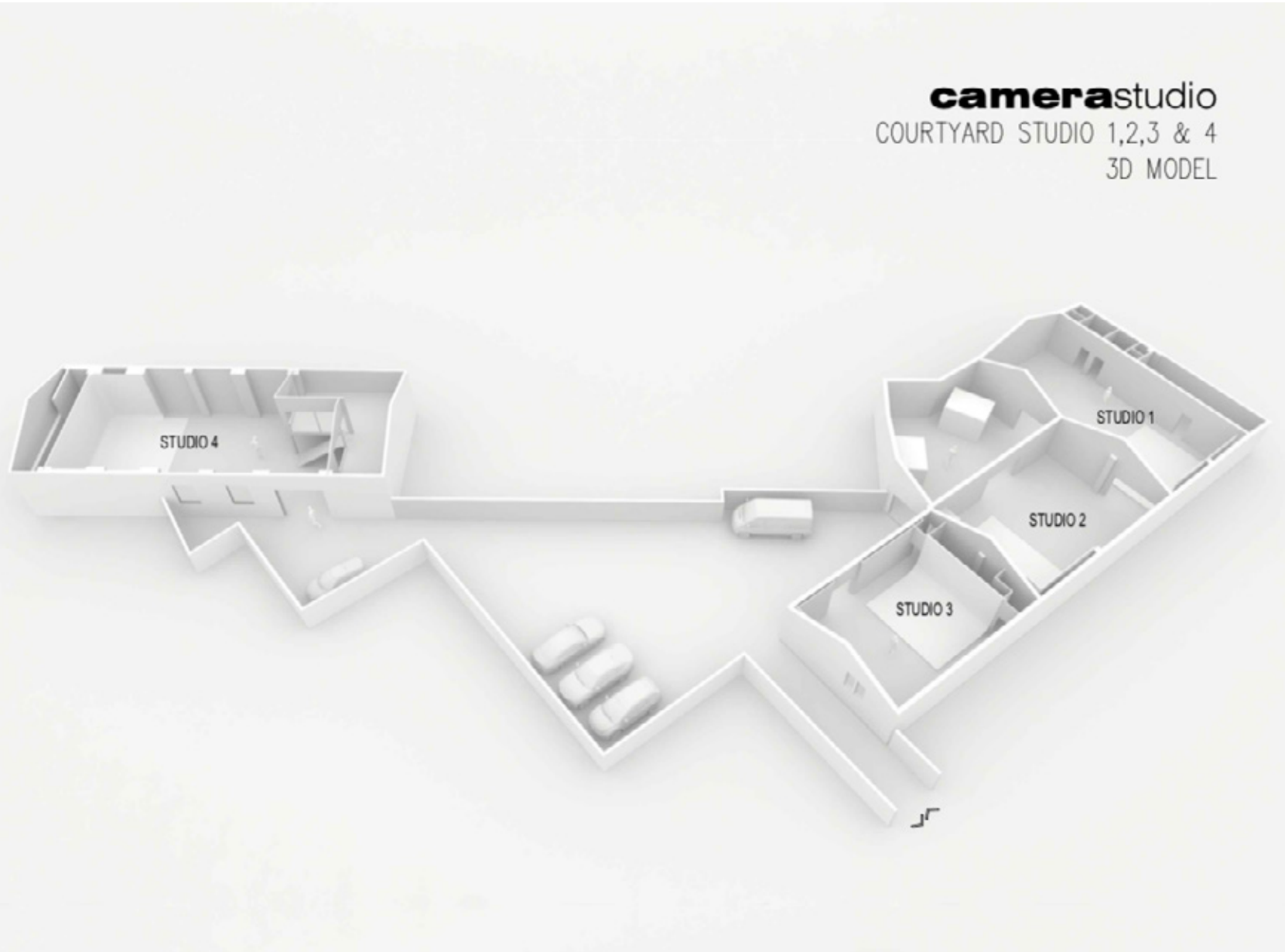
3

\*For more information click on each service

FLOOR PLANS STUDIOS 1, 2, 3 and 4

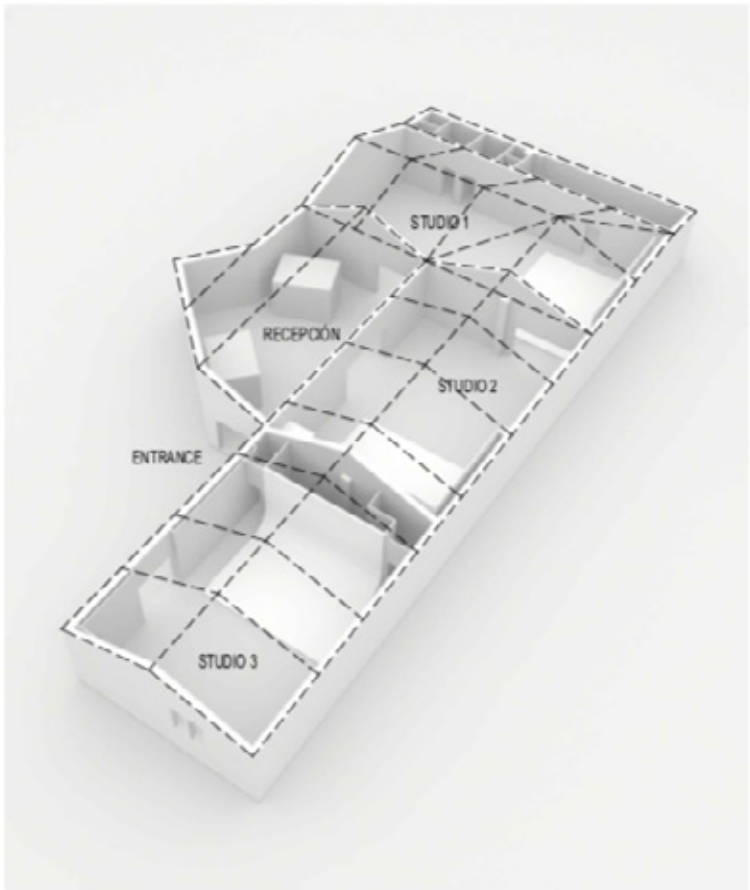
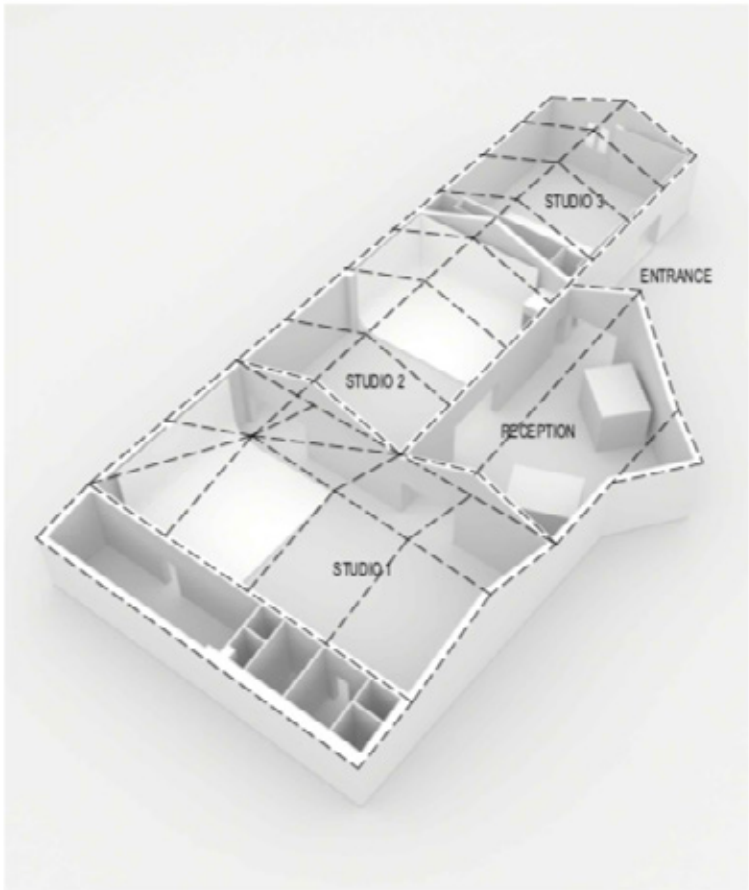


FLOOR PLANS STUDIOS 1, 2, 3 and 4



FLOOR PLANS STUDIOS 1, 2 and 3

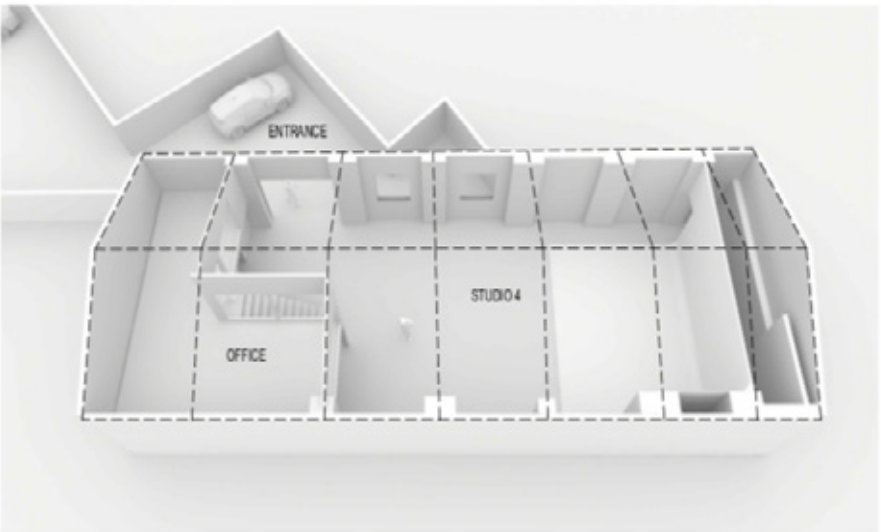
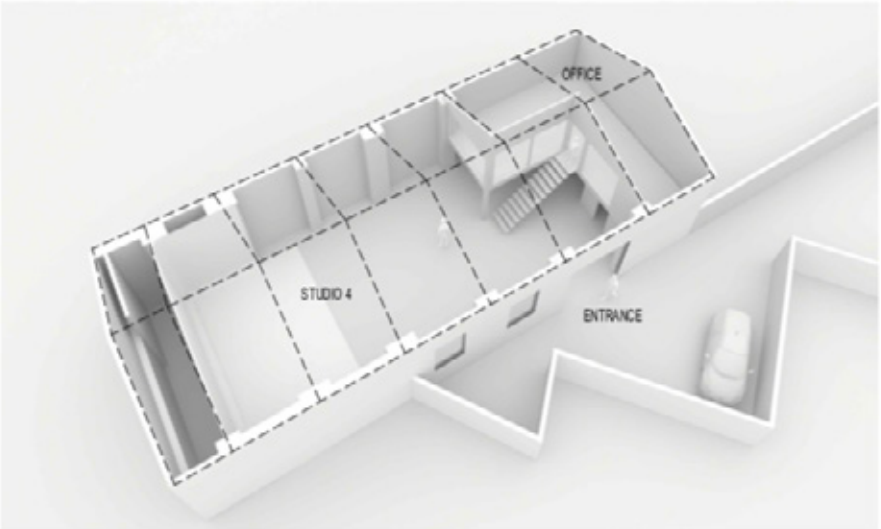
6



camerastudio  
STUDIO 1, 2 & 3  
3D MODEL

FLOOR PLAN STUDIO 4

7



camerastudio  
STUDIO 4  
3D MODEL

STUDIO 1

- 8,50 m x 15,50 m
- Gabled ceiling:  
Lateral height 3.70 m – Centre height 6.00 m
- West Side: wall to floor width:  
6.50 m – height: 3.70 m – length: 5.50 m
- East Side: wall to floor width:  
7.00 m – height: 3.70 m
- Wi-Fi access (1 GB optical Fiber)
- Fully equipped kitchenette
- Independent dressing room / make-up area
- 2 independent bathrooms with shower
- Dual hot / cold air conditioner 22.000 W
- Three-phase and single-phase electricity
- Blue-tooth audio system
- Vehicle access
- Private parking
- Possible Blackout
- Flash or continuous light included



TARIFA

PRECIO

Full day hire 9 hours	550 €
Half day hire 4 hours	400 €
Extra hour (up to 9:00 pm)	60 €
Extra hour at night ( 9:00 pm to 8:00 am)	90 €
Saturdays, Sundays and bank holidays	+ 50 %

FLOOR PLAN STUDIO PLAN 1





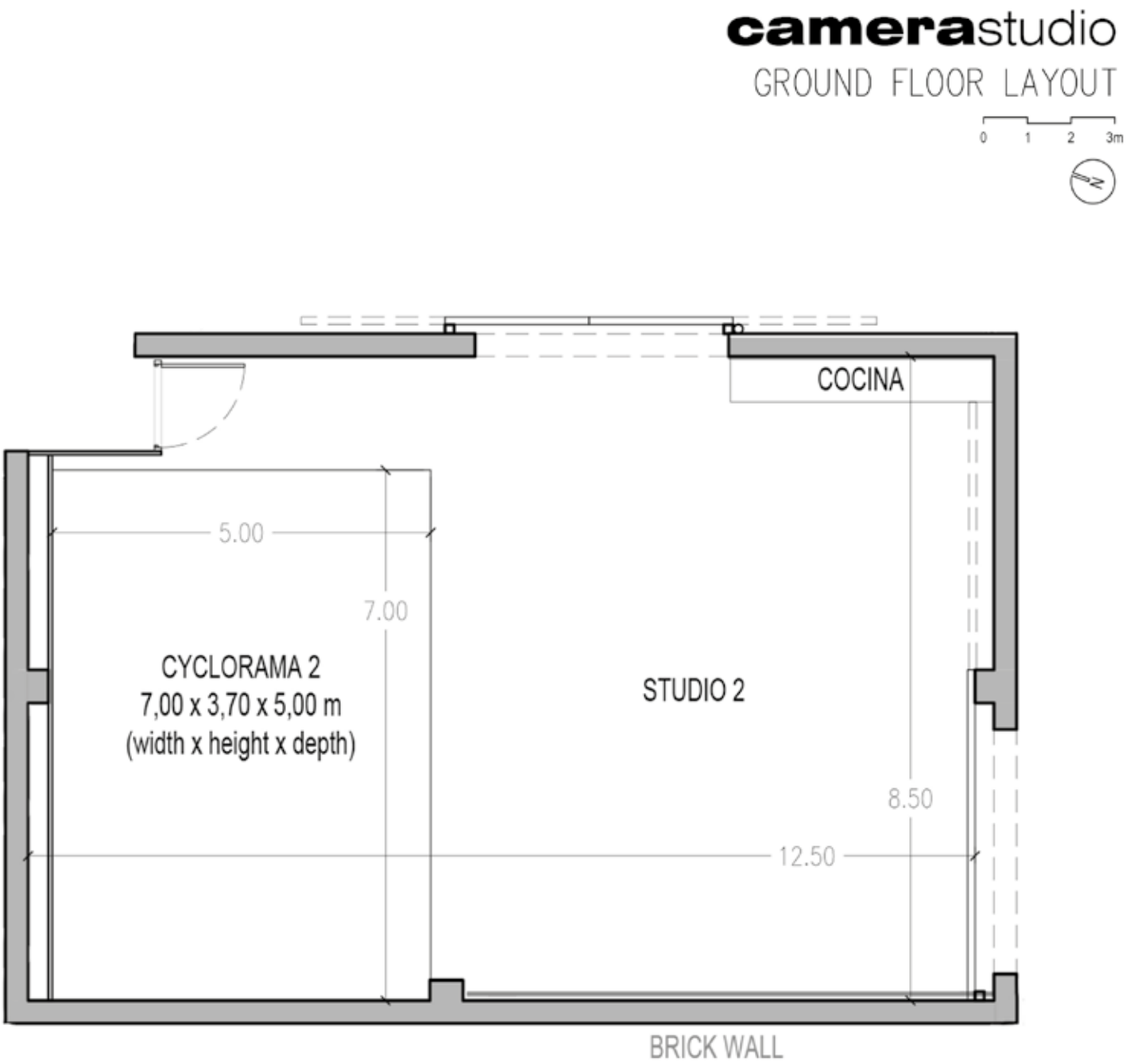
STUDIO 2

- 8,50 m x 12,50 m  
Zenith daylight 6,50 m x 8,00 m con palio opcional
- Gabled ceiling:  
Lateral height 3.70 m – Centre height 6.00 m
- Electrical ceiling curtains control system  
( 6,50 m x 8 m area)
- North side: corner: cyclorama wall-Floor-wall width:  
7.00 m – height: 3.70 m – length: 5.00 m
- West side: old brick wall width: 6.00 m – height: 3.70 m
- Wi-Fi access (1 GB optical Fiber)
- Fully equipped kitchenette
- independent make-up area
- 1 independent toilet
- Dual hot / cold air conditioner 22.000 W
- Three-phase and single-phase electricity
- Blue-tooth audio system
- Vehicle access
- Private parking
- Flash or continuous light included



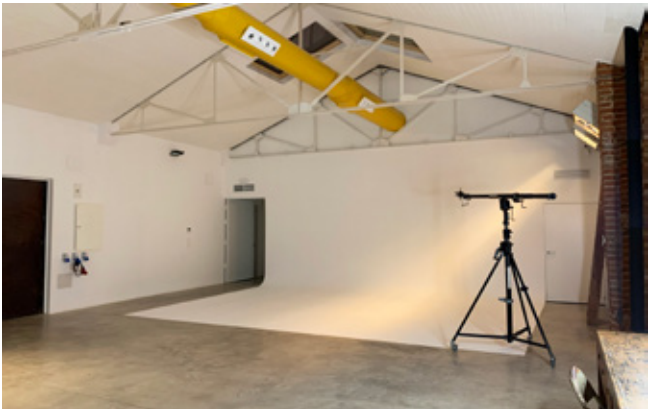
RATES	PRICE
Full day hire 9 hours	550 €
Half day hire 4 hours	400 €
Extra hour (up to 9:00 pm)	60 €
Extra hour at night ( 9:00 pm to 8:00 am)	90 €
Saturdays, Sundays and bank holidays	+ 50 %

FLOOR PLAN STUDIO PLAN 2



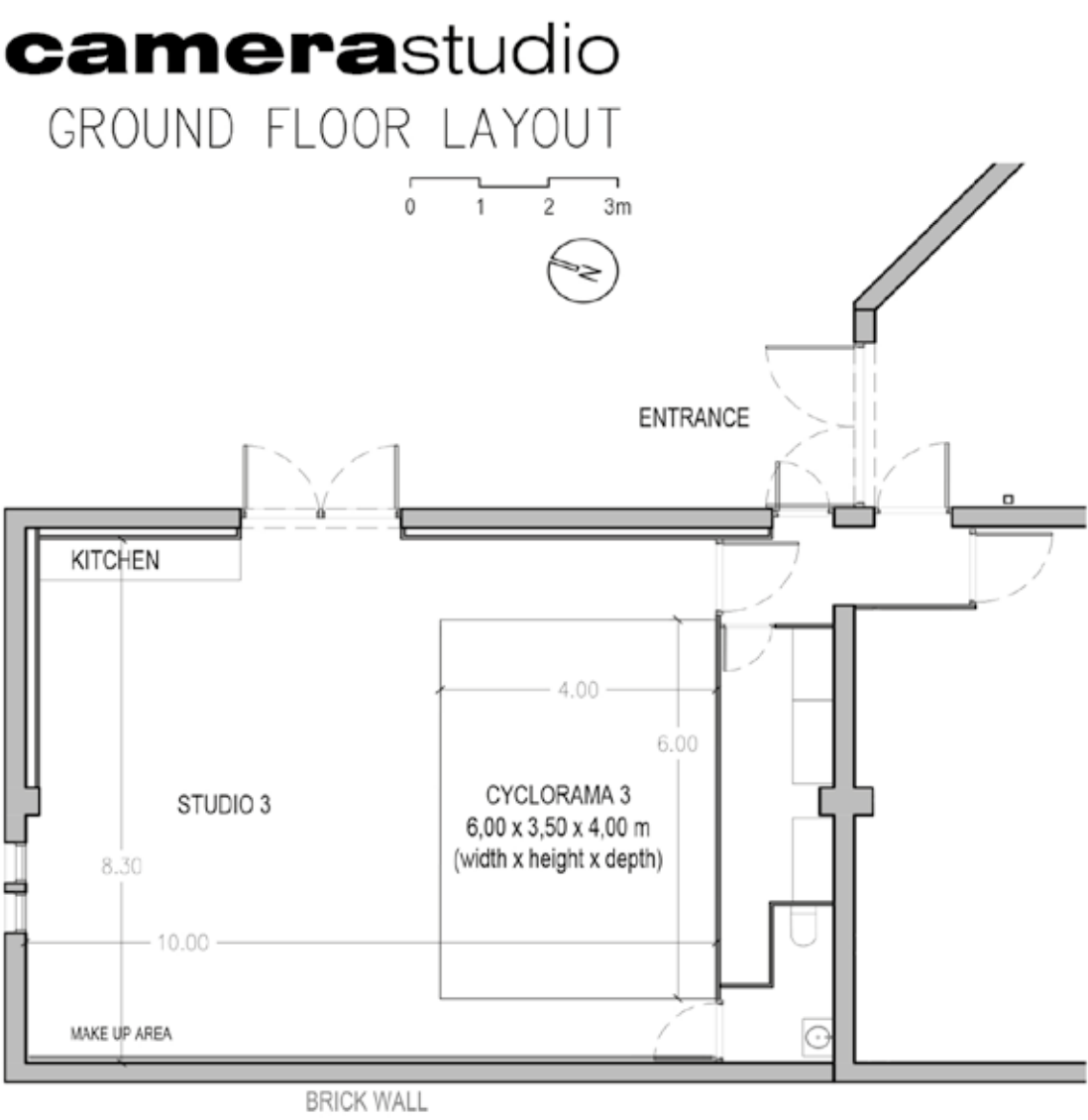
STUDIO 3

- 10,00 x 8,30 m
- Gabled ceiling:  
Lateral height 3.70 m – Centre height 6.00 m
- South side: corner cyclorama wall-Floor-wall width:  
7.00 m – height: 3.70 m – length: 5.00 m
- West side, brick wall:  
width: 10.00 m – height: 3.70 m
- Wi-Fi access (1 GB optical Fiber)
- Fully equipped kitchenette
- Dressing room / make-up area
- Independent toilet
- Dual hot / cold air conditioner 22.000 W
- Three-phase and single-phase electricity
- Blue-tooth audio system
- Vehicle access
- Private parking
- Flash or continuous light included



RATES	PRICE
Full day hire 9 hours	500 €
Half day hire 4 hours	375 €
Extra hour (up to 9:00 pm)	60 €
Extra hour at night ( 9:00 pm to 8.00 am)	90 €
Saturdays, Sundays and bank holidays	+ 50 %

FLOOR PLAN STUDIO PLAN 3





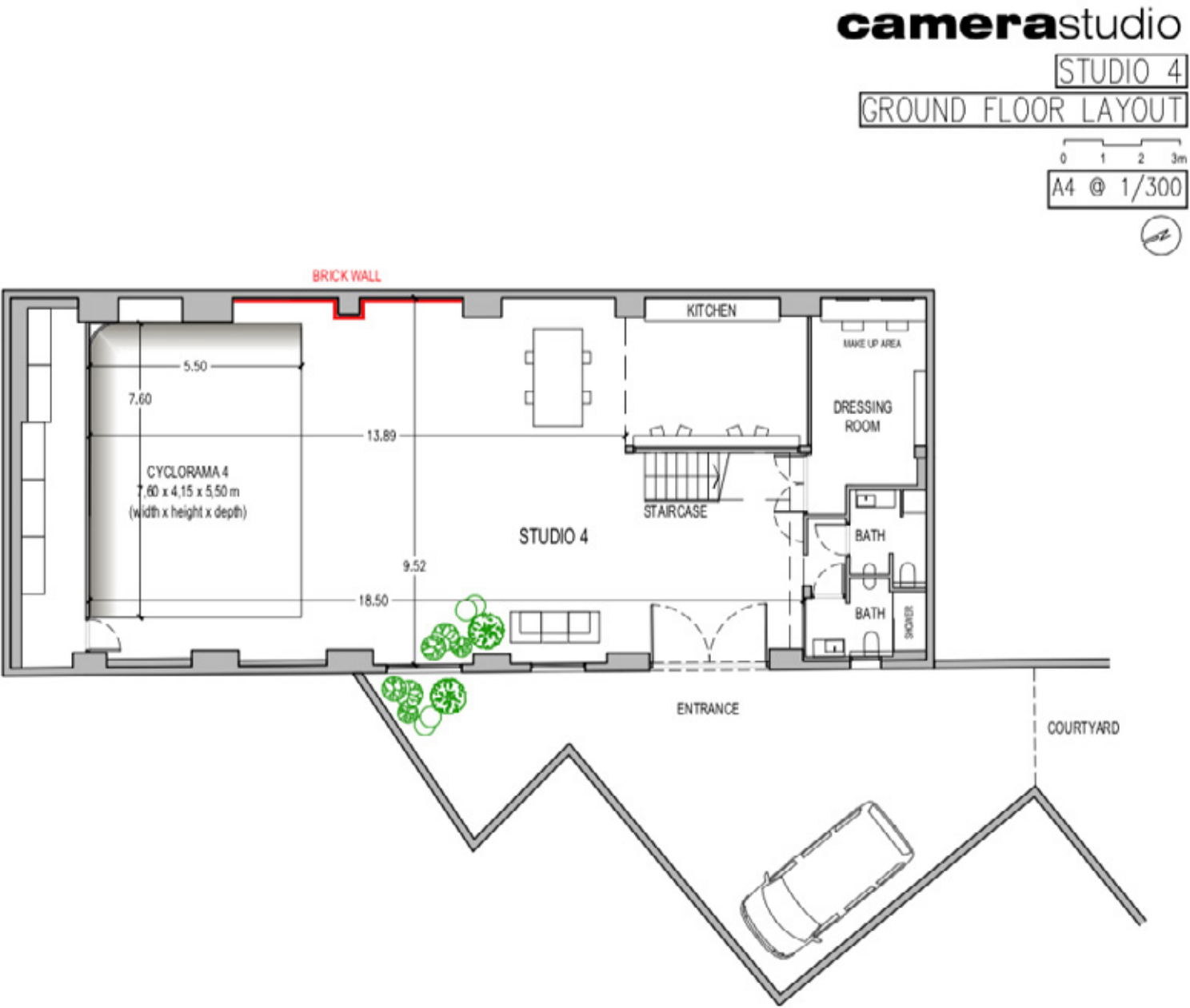
STUDIO 4

- 9,50 m x 18,50 m
- Gabled Ceiling::  
Lateral Height: 4.15 m, Centre Height: 6.00 m
- North Side, corner cyclorama wall-Floor-wall:  
width: 7.60 m – height: 4.15 m – length: 5.50 m
- East Side, wall to Floor:  
width: 6.00 m – height: 4.30 m
- Wi-Fi access (1 GB optical Fiber)
- Fully equipped kitchenette
- Production office 50 m2
- Independent dressing room / make-up area
- 2 independent bathrooms with shower
- Dual hot / cold air conditioner 28.000 W
- Three-phase and single-phase electricity
- Blue-tooth audio system
- Vehicle access
- Private parking
- Posible oscuridad total
- Flash or continuous light included



RATES	PRICE
Full day hire 9 hours	850 €
Half day hire 4 hours	600 €
Extra hour (up to 9:00 pm)	100 €
Extra hour at night ( 9:00 pm to 8:00 am)	150 €
Saturdays, Sundays and bank holidays	+ 50 %

FLOOR PLAN STUDIO 4





STUDIO 5

- 11,43 m x 22,85 m
- Located at C/ Juan del Risco 37, bajo Interior 28039 Madrid
- Gabled ceiling: lateral height 4 m, central height 6 m
- Electrical ceiling curtains control system (6,00 m x 25,60 m area)
- South side: corner cyclorama wall-Floor-wall width: 5.00 m – height: 4.00 m – length: 6.00 m
- 2 independent make-up areas
- 1 independent bathroom
- 1 independent toilet
- Fully equipped kitchenette
- Dual hot / cold air conditioner 18000 w
- Three-phase and single-phase electricity
- Wi-Fi access (1 GB optical fiber)
- Flash or continuous light included



RATES	PRICE
Full day hire 9 hours	450 €
Full day hire with audio recording 09 hours	550 €
Extra hour (up to 9:00 pm)	60 €
Extra hour at night ( 9:00 pm to 8.00 am)	90 €
Saturdays, Sundays and bank holidays	+ 50 %

FLOOR PLAN STUDIO 5



FORFAIT OPTION 1

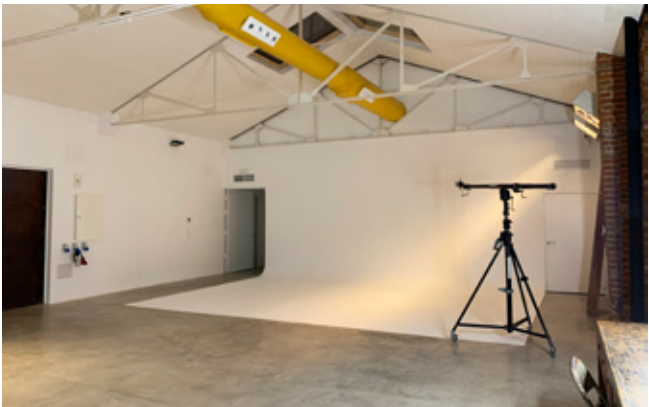
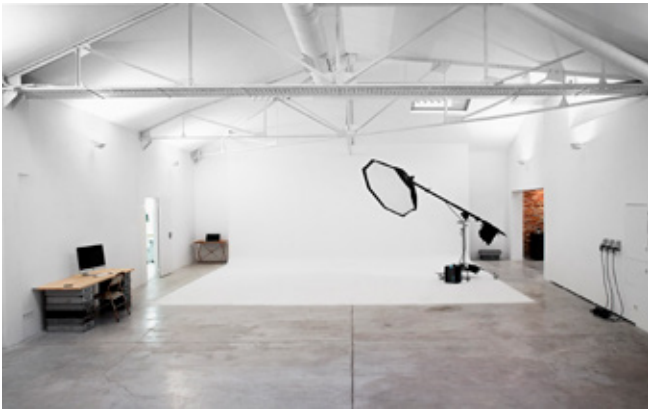
- studio 1 + studio 2 + chill out area: 420 m2
- 2 dressing room / make-up area
- 3 independent bathrooms with shower
- 2 Fully equipped kitchenette
- Dual hot / cold air conditioner 22.000 W
- Three-phase electricity 40 KW
- Wi-Fi access (1 GB optical Fiber)
- Vehicle access
- Private parking
- Flash or continuous lighting included



RATES	PRICE
Full day hire 9 hours	1.325 €
Extra hour (up to 9:00 pm)	150 €
Extra hour at night ( 9:00 pm to 8:00 am)	200 €
Saturdays, Sundays and bank holidays	+ 50 %

FORFAIT OPTION 2

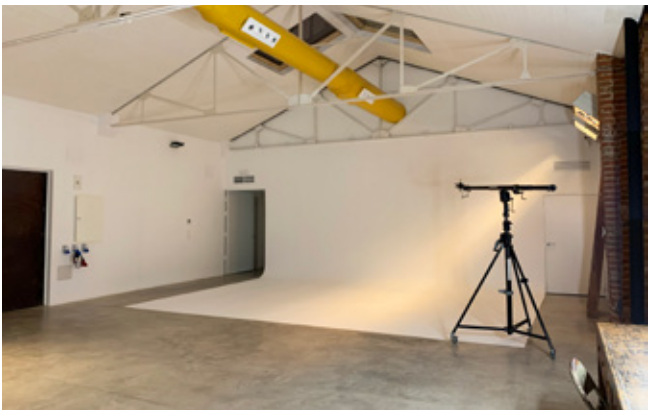
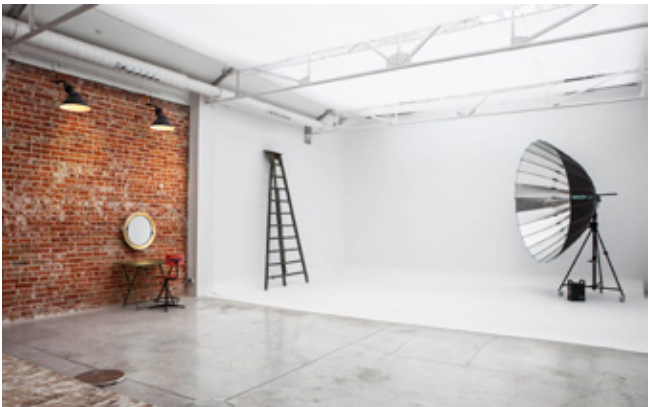
- studio 1 + studio 2 + studio 3 + chill out area: 500 m2
- 3 dressing room / make-up area
- 4 independent bathrooms with shower
- 3 Fully equipped kitchenette
- Dual hot / cold air conditioner 22.000 W
- Three-phase electricity 40 KW
- Wi-Fi access (1 GB optical Fiber)
- Blue-tooth audio system
- Vehicle access
- Private parking
- Flash or continuous light included



RATES	PRICE
Full day hire 9 hours	1.825 €
Extra hour (up to 9:00 pm)	200 €
Extra hour at night ( 9:00 pm to 8:00 am)	260 €
Saturdays, Sundays and bank holidays	+ 50 %

FORFAIT OPTION 3

- Studio 2 + studio 3: 190 m2
- 2 dressing room / make-up area
- 2 independent bathrooms
- 2 Fully equipped kitchenette
- Dual hot / cold air conditioner 22.000 W
- Three-phase electricity 40 KW
- Wi-Fi access (1 GB optical Fiber)
- Blue-tooth audio system
- Vehicle access
- Private parking
- Flash or continuous lighting included



RATES	PRICE
Full day hire 9 hours	1.050 €
Extra hour (up to 9:00 pm)	120 €
Extra hour at night ( 9:00 pm to 8:00 am)	180 €
Saturdays, Sundays and bank holidays	+ 50 %



FLASH EQUIPMENT INCLUDED IN HIRE

STUDIO 1, 2, 3 or 4
2 x ProFoto Pro 10, Pro 11 or Broncolor Scoro S
3 x ProFoto or Broncolor Pulso G Flash Head
3 x Lighting accessories: square/rectangular Softboxes or umbrella S/M/L
Stand and studio accessories: Camera Tripod, stand, Clamps...



STUDIO 1 and 2 or 2 and 3
4 x ProFoto Pro 10 Pro 11 or Broncolor Scoro S
6 x ProFoto or Broncolor Pulso G Flash Head
6 x Lighting accessories: square/rectangular Softboxes or umbrella S/M/L
Stand and studio accessories: Camera Tripod, stand, Clamps...

STUDIO 5
2 x ProFoto Pro 8, Pro 10 or Broncolor Scoro S
3 x ProFoto or Broncolor Pulso G Flash Head
3 x Lighting accessories: square/rectangular Softboxes or umbrella S/M/L
Stand and studio accessories: Camera Tripod, stand, Clamps...



CONTINUOUS LIGHT EQUIPMENT INCLUDED IN HIRE

STUDIO 1, 2, 3 or 4
1 x Broncolor HMI 1600 con Para 133/PAR KIT
1 x Kino Flo 4 Bank 4´ - 1.20 m 3200 K o 5600K
Stand and studio accessories: Camera Tripod, stand, Clamps...
0.80€ Kw/hr Electricity Consumption
4€/hr Broncolor HMI Lamp Consumption



STUDIO 1 and 2 or 2 and 3
1 x Broncolor HMI 1600 con Para 133
1 x Broncolor HMI 1600 PAR KIT
2 x Kino Flo 4 Bank 4´ - 1.20 m 3200 K o 5600K
Stand and studio accessories: Camera Tripod, stand, Clamps...
0.80€ Kw/hr Electricity Consumption
4€/hr Broncolor HMI Lamp Consumption

ESTUDIO 5
1 x Broncolor HMI 1600 con Para 133/PAR KIT
1 x Kino Flo 4 Bank 4´ - 1.20 m 3200 K o 5600K
Stand and studio accessories: Camera Tripod, stand, Clamps...
0.80€ Kw/hr Electricity Consumption
4€/hr Broncolor HMI Lamp Consumption



HIRE TEARMJS AND CONDITIONS

The Full day hire is 09 hours between 9am to 7pm
The half-day is between 9:00 a.m. and 2:00 p.m. in the morning and in the afternoon From 3:00 p.m. to 7:00 p.m
The hours that exceed these bands will be considered overtime. Night rate overtime will be applied after 9:00 pm
Hire options have to be confirmed 48hrs before the production. Any confirmed booking For the same date will replace any other option
Booking cancellations with less than 48 hrs in advance will incur a 50 % charge
Reservations of individual sets canceled less than 24 hours before the reservation, will be applied have a 100% charge
Saturday, Sunday and bank holidays only Full day hire available
Saturdays, Sundays and bank holidays in Madrid will incur an increase of 50% of the hire rate
camera-studio will inform all clients of the equipment included in the hire. Any other equipment will be charged separately
The responsibility For damages due to the misuse of equipment, Furniture and infrastructures, will be of the client, even if these are caused by subcontractors
I mac 27' only included in the hire price if is available and with prior reservation via email
To reserve the studio 4 For productions with audio recording, it's necessary to specify the type of production it is
Forfait 1 and 2 reservation have to be confirmed 10 days in advance and advance payment has to be made
50% will be returned to the client if a Forfait cancelation is made between 10 and 7 days prior to the production
100% with be charged to the client if Forfait cancelation are made with less than 7 days notice
In the event of cancelling a production and extra equipment with less than 24 hours notice, the total quote amount will be charged
Human services reserved and cancelled with less than 24 hours notice, will be charged Fully
All equipment included in the hire price is subject to availability and it could be either ProFoto or Broncolor



CAMERA-RENT

Available 24/7 throughout the year, to meet all your high-end professional lighting equipment and camera requirements in Spain mainland and Balearic Islands.



We offer all our support so you can have a flawless production.



MADRID





C/ General Alvarez de Castro 12,  
Nave 11

28010 Madrid

Tel: 911 730 320 - 638 119 438

[info@camera-studio.es](mailto:info@camera-studio.es)

[www.camera-studio.es](http://www.camera-studio.es)



C/ Juan del Risco 37

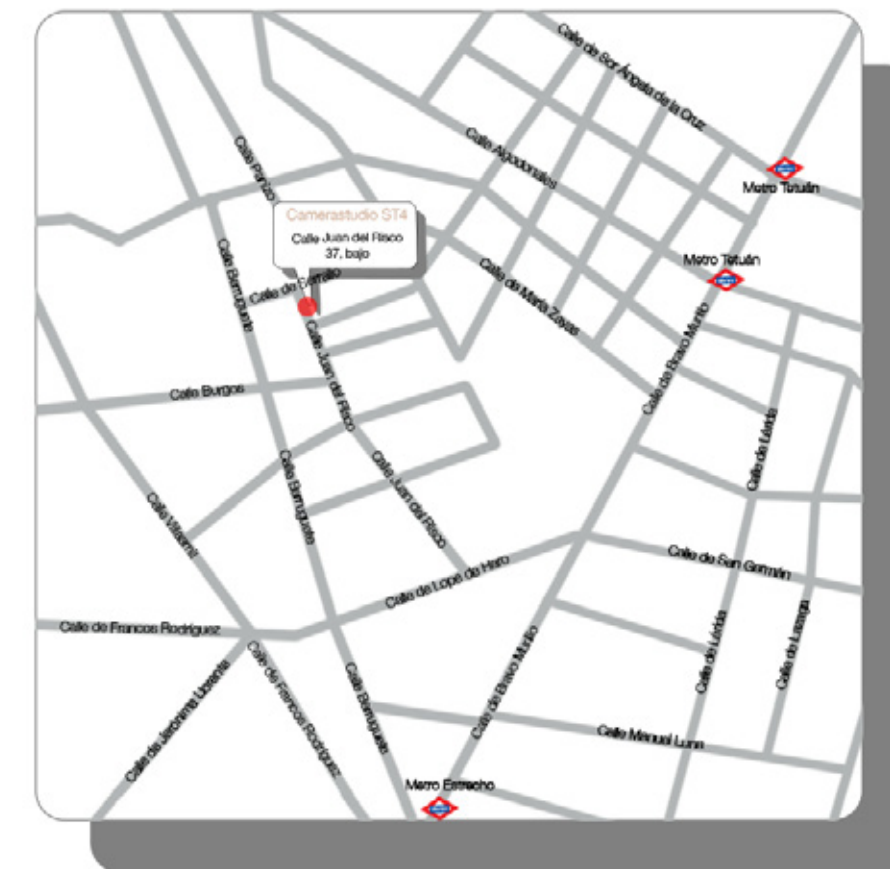
Bajo Interior

28039 Madrid

Tel: 911 730 320 - 638 119 438

[info@camera-rent.es](mailto:info@camera-rent.es)

[www.camera-rent.es](http://www.camera-rent.es)



**camera**studio

**camera**rent